

HERCULES HOISTS LIMITED



**Compact Wire Rope Hoist
HW Series**

- ◆ Lifting
- ◆ Moving
- ◆ Storing

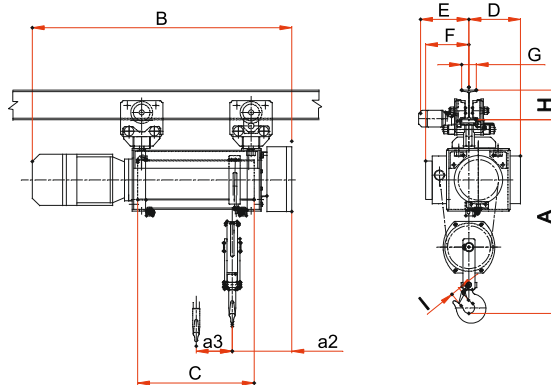


Material Handling. Delivered.

Redefining Material Handling. Since 1962.

- ▶ Extensive range
From 1 T SWL to 40 T SWL
- ▶ Proven design with guaranteed safety & reliability
- ▶ Planetary gear box
Smooth and low noise operation
- ▶ Gear box inside rope drum
Compact design
- ▶ Twin drum, (4/2) fall option available
High speed and high lift option readily available
- ▶ Geared couplings
Enhanced transmission
- ▶ Overload sensor
- ▶ Optional VFD, Radio remotes, special lower blocks, PLC controls, rotary limit switch
Truly customisable
- ▶ Hoist and electric control design available for hazardous area application
Extended application capability

HW - 2 (L) / HW - 2 WIRE ROPE HOISTS



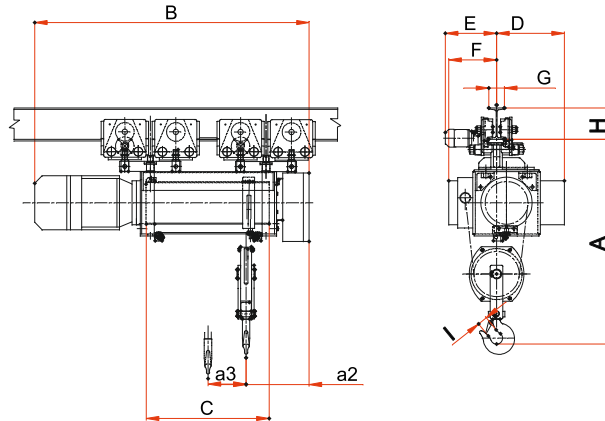
Type		HW2 (L)								HW2								
		H1	H3	H5	H7	H1	H3	H5	H7	H2	H4	H6	H9	H2	H4	H6	H9	
Drum Length (C)	mm	583	832	1232	1631	583	832	1232	1631	699	1032	1432	2031	699	1032	1432	2031	
SWL Class - II	Tonnes	1.5				3				3				6				
SWL Class - IV	Tonnes	1.25				2.5				2.5				5				
Lift	M	12	20	35	50	6	10	18	25	12	20	35	50	6	10	18	25	
No. Of Falls		2 Falls		4 Falls		2 Falls		4 Falls		2 Falls		4 Falls		2 Falls		4 Falls		
Wire Rope Dia.	mm	8				8				10				10				
Hoisting Speed	M/Min.	5.9				2.95				8.2				4.1				
Hoisting Motor Kw.	Kw	2.2				2.2				5.5				5.5				
Travelling Speed	M/Min.	17				17				17				17				
Travelling Motor Kw.	Kw	0.18 KW				0.37 KW				0.37 KW				0.55 KW				
Trolley Wheel (Dia./Qty.)	mm /Nos.	140 (4)				140 (4)				140 (4)				140 (4)				
Dimn. A (Head Room)	mm	1230				1180				1280				1240				
Dimn. (B) (Note-1)	mm	1375	1625	2025	2425	1376	1625	2025	2424	1597	1882	2262	2881	1597	1882	2262	2881	
Dimn. D	mm	210				243				210				243				
Dimn. E (Note-3) Min.	mm	600				600				600				600				
Dimn. F	mm	321				205				321				205				
Dimn. G (Flange Width)	mm	90 - 180				125 - 210				90 - 180				125 - 210				
Dimn. H (Beam Height)	mm	175				250				175				250				
Dimn. I	mm	37				42				42				52				
Dimn. a2	mm	370				406				370				406				
Dimn. a3	mm	160	280	480	680	95	175	310	440	215	380	580	780	130	245	375	815	
Approx. Weight	Hoist	Kg	220	250	305	340	245	270	320	365	235	270	320	365	255	295	340	385
	Trolley	Kg	120	120	120	120	120	120	120	120	150	150	150	150	150	150	150	150
	Total	Kg	340	370	425	460	365	390	440	485	385	420	470	515	405	445	490	535

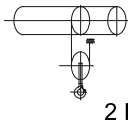
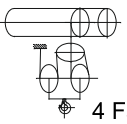
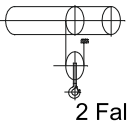
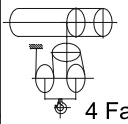
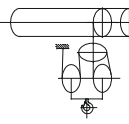
NOTES:

Data Tolerance ±10% .

- 1) 1:3 CREEP SPEED CAN BE GIVEN AT EXTRA COST & DIMENSIO 'B' WILL INCREASE BY 165 MM
- 2) 13,26 MPM TROLLIES ALSO CAN BE SUPPLIED (SINGLE REDUCTION GEAR BOX)
- 3) 8.5, 4.25, 2.8, 2.1 MPM TROLLIES ALSO CAN BE SUPPLIED (DOUBLEE REDUCTION GEAR BOX) AT EXTRA COST, DIMENSION 'E' WILL INCREASE IN 100MM.

HW3, HW4 (L), HW4 (HL) WIRE ROPE HOISTS



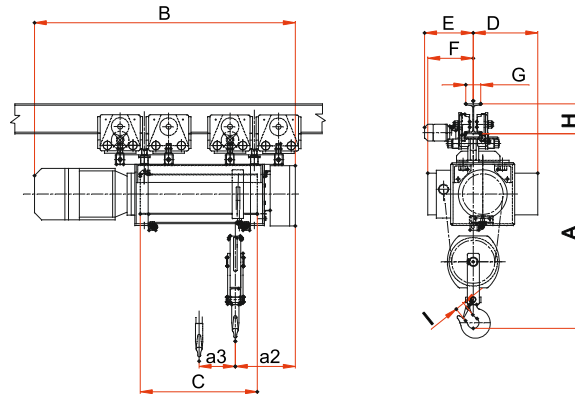
Type		HW3								HW4 (L)						HW4 HIGH LIFT					
		H2	H4	H6	H9	H2	H4	H6	H9	H1	H4	H8	H1	H4	H8	H2	H4	H5	H2	H4	
Drum Length (C)	mm	706	1030	1419	2002	706	1030	1419	2002	695	1201	2100	695	1201	2100	1700	2200	2450	2150	2750	
SWL Class - II	Tonnes	5				10				6			12			12		20			
SWL Class - IV	Tonnes	4				8				5			10			10		16			
Lift	M	12	20	35	50	6	10	18	25	14	30	60	7	15	30	30	40	45	30	40	
No. Of Falls																					
Wire Rope Dia.	mm	13				13				13			13			13		18			
Hoisting Speed	M/Min.	8.1				4.0				8.2			4.1			3.8					
Hoisting Motor Kw.	Kw	9.3				9.3				15			15			15					
Travelling Speed	M/Min.	17				17				17			17			17					
Travelling Motor Kw.	Kw	0.37 KW				0.55 KW (2 NOS.)				0.55 Kw			0.55 Kw (2 Nos.)			0.75 KW (2 Nos.)					
Trolley Wheel Dia/Qty.	mm/Nos.	140 (4)				140 (4)				140 (4)			140 (8)			140 (8)					
Dimn. A (Head Room)	mm	1550				1530				1670			1660			1860					
Dimn. (B) (Note-1)	mm	1668	1992	2381	2964	1668	1992	2381	2964	1796	2302	3201	1796	2302	3201	12464	3254	3504	2754	3236	
Dimn. D	mm	512				486				539			500			500					
Dimn. E (Note-3) Min.	mm	600				600				600			600			600					
Dimn. F	mm	408				434				381			420			381					
Dimn. G	mm	125 - 210				125 - 210				125 - 210			150 - 210			125 - 210					
Dimn. H (MIN.)	mm	250				250				250			450			250					
Dimn. I	mm	52				78				78			95			78					
Dimn. a2	mm	484				587				505			597			548					
Dimn. a3	mm	202	365	560	755	100	210	340	465	183	436	886	91	260	560	155	317	480	135	335	
Approx. Weight	Hoist	Kg	340	390	450	510	370	420	480	535	480	550	735	530	590	835	850	950	1100	900	1000
	Trolley	Kg	120	120	120	120	140	140	140	140	140	140	140	280	280	280	280	280	280	280	280
	Total	Kg	460	510	570	630	510	560	620	675	620	690	875	810	870	1115	1130	1230	1380	1180	1280

NOTES:

Data Tolerance ±10% .

- 1) 1:3 CREEP SPEED CAN BE GIVEN AT EXTRA COST & DIMENSION 'B' WILL INCREASE BY 165 MM
- 2) 13,26 MPM TROLLIES ALSO CAN BE SUPPLIED (SINGLE REDUCTION GEAR BOX)
- 3) 8.5, 4.25, 2.8, 2.1 MPM TROLLIES ALSO CAN BE SUPPLIED (DOUBLE REDUCTION GEAR BOX) AT EXTRA COST, DIMENSION 'E' WILL INCREASE IN 100 MM.

HW4 (M), HW4 (H), HW5 & HW5 (H) WIRE ROPE HOISTS



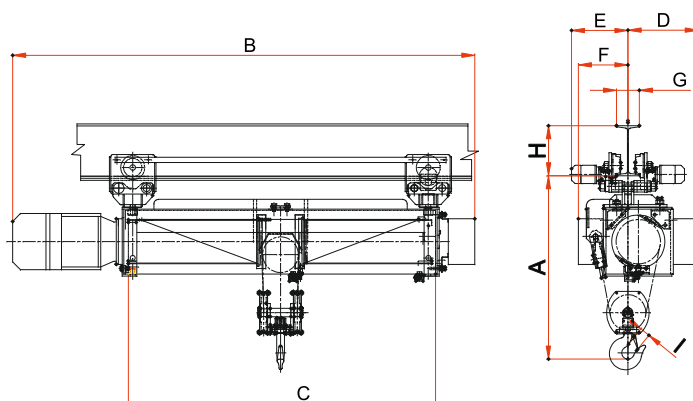
Type		HW4 (M)								HW4 (H)								HW5			HW5 (H)		
		H1	H3	H5	H9	H1	H3	H5	H9	H1	H3	H5	H9	H1	H3	H5	H9	H4	H6	H8	H4	H7	
Drum Length (C)	mm	695	976	1426	2325	695	976	1426	2325	695	976	1426	2325	695	976	1426	2325	1238	1684	2220	1238	1906	
SWL Class - II	Tonnes	7.5				15				10				20				30			45		
SWL Class - IV	Tonnes	6				12				8				16				25			35		
Lift	M	10	18	30	50	5	9	15	25	10	18	30	50	5	9	15	25	10	18	25	10	18	
No. Of Falls																							
Wire Rope Dia.	mm	18				18				18				18				22			24		
Hoisting Speed	M/Min.	8.2				4.1				6.7				3.3				3.5			2.6		
Hoisting Motor Kw.	Kw	15				15				15				15				22			22		
Travelling Speed	M/Min.	17				17				17				17				12			12		
Travelling Motor Kw.	Kw	0.55 Kw (2 Nos.)				0.75 Kw (2 Nos.)				0.55 Kw (2 Nos.)				0.75 Kw (2 Nos.)				1.1 (2 Nos.)			1.1 (2 Nos.)		
Trolley Wheel	Dia (Nos)	140 (4)				140 (8)				140 (4)				140 (8)				140 (8)			160 (8)		
Dimn. A (Head Room)	mm	1860				1840				1860				1840				2550			2700		
Dimn. (B) (Note-1)	(mm)	1796	2077	2527	3426	1796	2077	2527	3426	1796	2077	2527	3426	1796	2077	2527	3426	2617	3063	3438	2617	3518	
Dimn. D	mm	539				500				539				500				646			646		
Dimn. E	mm	585				605				585				605				802			802		
Dimn. F	mm	381				420				381				420				489			497		
Dimn. G (Flange Width)	mm	125 - 210				150 - 210				125 - 210				150 - 210				180-300			180-300		
Dimn. H (Beam Size)	mm	250				450				250				450				550			600		
Dimn. I	mm	78				95				78				95				155			168		
Dimn. a2	mm	548				652				548				652				821			656		
Dimn. a3	mm	99	220	415	706	40	121	250	445	99	220	415	706	40	121	250	445	291	437	583	351	570	
Approx. Weight Hoist	Kg	480	510	595	765	530	570	695	835	480	510	595	765	530	570	695	835	820	885	950	900	975	
	Trolley	Kg	180	180	180	180	280	280	280	280	140	140	140	140	280	280	280	280	300	300	300	350	350
	Total	Kg	660	690	775	945	810	850	975	1115	620	650	735	905	810	850	975	1115	1120	1185	1250	1250	1325

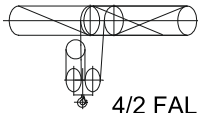
NOTES:

- 1) 1:3 CREEP SPEED CAN BE GIVEN AT EXTRA COST. & DIMENSION 'B' WILL INCREASE BY 165 MM
- 2) 13,26 MPM TROLRIES ALSO CAN BE SUPPLIED (SINGLE REDUCTION GEAR BOX)
- 3) 8.5, 4.25, 2.8, 2.1 MPM TROLRIES ALSO CAN BE SUPPLIED (DOUBLE REDUCTION GEAR BOX) AT EXTRA COST, DIMENSION 'E' WILL INCREASE IN 100 MM.

Data Tolerance ±10% .

HW2, HW3, HW4 (M), (H) (LH/RH) WIRE ROPE HOISTS



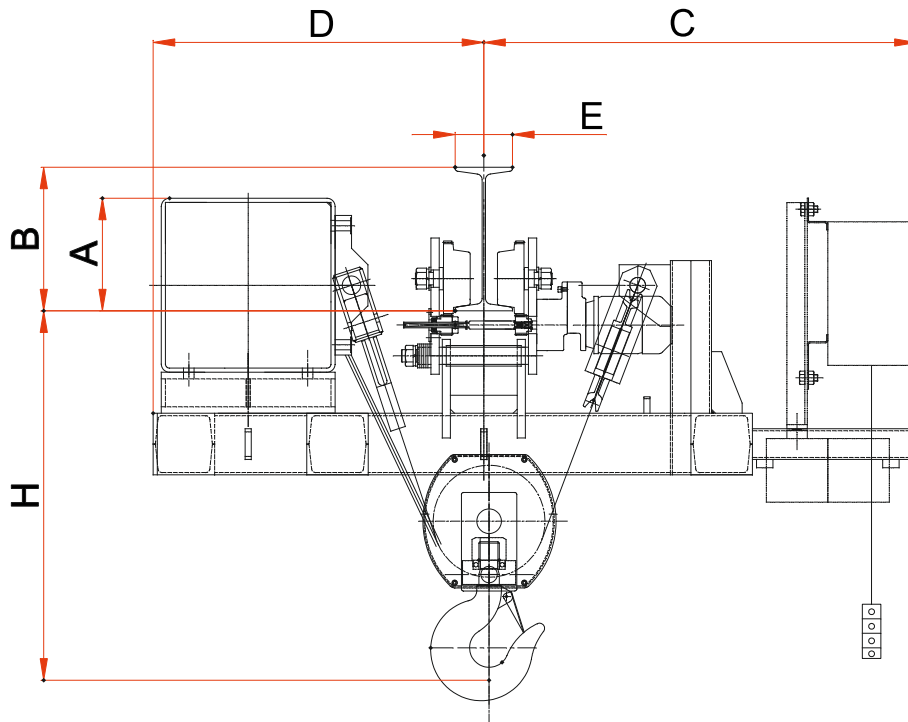
TYPE		HW2			HW3			HW4 (M) / HW4 (H)			
		H4	H6	H8	H3	H5	H7	H4	H6	H8	
DRUM LENGTH.	MM	1032	1432	1831	836	1225	1613	1201	1651	2100	
SWL CLASS - II	TONNES	3			5			7.5 / 10			
SWL CLASS - IV	TONNES	2.5			4			6 / 8			
LIFT	M	10	18	25	10	18	25	10	18	25	
NO. OF FALLS	 4/2 FALLS										
WIRE ROPE DIA.	mm	8			10			13			
HOISTING SPEED	M/MIN.	8.2			8.1			8.2 / 6.7			
HOISTING MOTOR KW.	Kw	5.5			9			15			
TRAVELLING SPEED	M/MIN.	17			17			17			
TRAVELLING MOTOR KW.	Kw	0.37			0.37			0.55 KW (2 NOS)			
Trolley Wheel Dia./Qty.	mm/ Nos.	140 (4)			140 (4)			140 (4)			
DIMN. A (HEAD ROOM)	mm	1160			1400			1600			
DIMN. (B)	mm	1930	2330	2729	1798	2381	2575	2270	2752	3426	
DIMN. D	mm	210			260			347			
DIMN. E	mm	550			410-460			410 - 460			
DIMN. F	mm	321			240			309			
DIMN. G (Flange Width)	mm	90-180			125-210			125 - 210			
DIMN. H (Beam Size)	mm	250			250			250			
DIMN. I	mm	42			52			78			
APPROX.WEIGHT	HOIST	Kg	385	430	560	545	600	780	845	1045	1090
	TROLLEY	Kg	120	120	120	120	120	120	140	140	140
	TOTAL	Kg	505	550	680	665	720	900	985	1185	1230

Data Tolerance $\pm 10\%$.

NOTES:

- 1) 1:3 CREEP SPEED CAN BE GIVEN AT EXTRA COST & DIMENSION 'B' WILL INCREASE BY 165 MM
- 2) 13,26 MPM TROLLIES ALSO CAN BE SUPPLIED (SINGLE REDUCTION GEAR BOX)
- 3) 8.5, 4.25, 2.8, 2.1 MPM TROLLIES ALSO CAN BE SUPPLIED (DOUBLE REDUCTION GEAR BOX) AT EXTRA COST.
DIMENSION 'E' WILL INCREASE IN 100 MM.

SHORT HEAD ROOM WIRE ROPE HOISTS



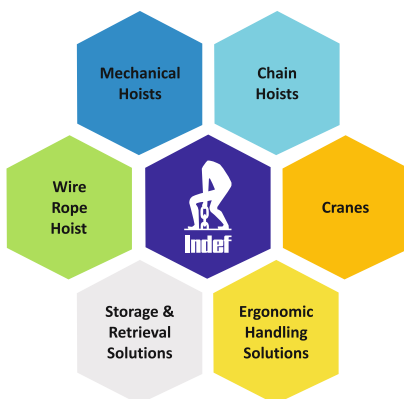
Model	Capacity	Falls	A (Max.)	B Beam Height (Min.)	C	D	E F.W. (Min.)	H Head Room (Min.)
HW-2	3T	2F	300	350	650	600	125-210	800
	6T	4F	300	350	650	600	125-210	800
HW-3	5T	2F	325	350	925	730	125-210	800
	10T	4F	325	350	920	800	125-210	1000
HW-4	10T	2F	375	400	1110	960	125-210	1100
	20T	4F	375	400	1130	980	125-210	1100

Data Tolerance $\pm 10\%$.

NOTE :

- 1) SUITABLE FOR STRAIGHT PATH ONLY.
- 2) TROLLEY MOTION MOTORISED.
- 3) HOIST IS SUITABLE FOR SPECIFIC BEAM SIZE. REQUIRED BEAM DETAILS ALONG WITH ORDER.
- 4) PLEASE REFER SPECIFICATION LEAFLET FOR OTHER DETAILS.

Note :- Due to continuous development and improvement specification listed above may be changed without notice.



HERCULES HOISTS LIMITED

43/2B, Savroli-Kharpada Road, Dhamani, Khalapur - 410 202, Maharashtra, India

Regional offices: Chennai | Kolkata | New Delhi | Pune

Tel :+91 (0)2192 662511 | Fax: +91 (0) 2192 662504

www.indef.com | enquire@indef.com